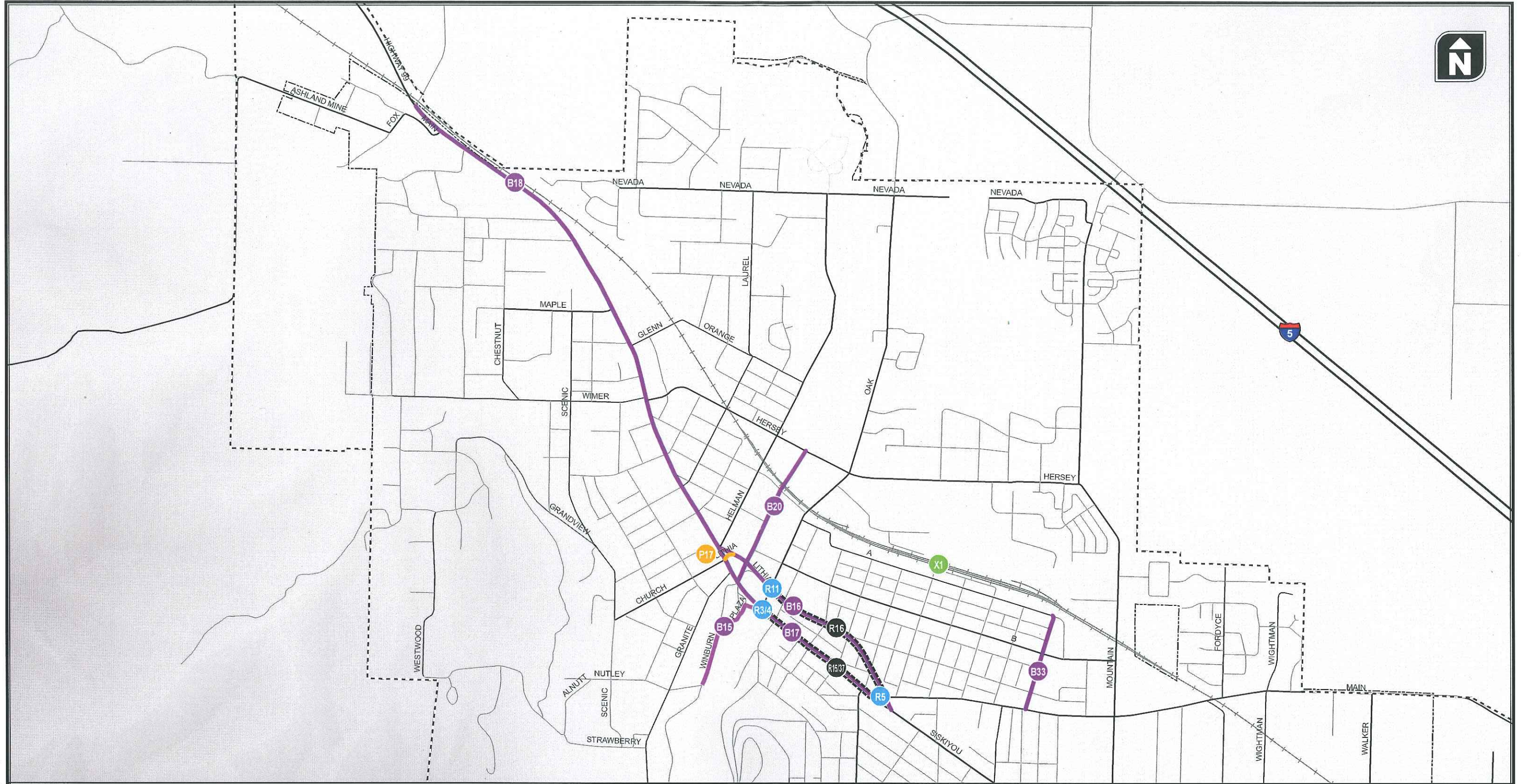


CITY OF ASHLAND - DOWNTOWN PROJECTS

Project, Policy or Study	Description	Staff Recommendations	TC/PC Results from Previous Meetings
(B15) Pioneer Street	Bicycle Boulevard - Main Street to Central Bike Path	Reword description to confirm connection to Lithia Park bike path instead of Central Bike Path.	
(B16) Lithia Way	Buffered Bike Lane - From Helman Street to Siskiyou Boulevard. Included as part of Project R16.	Remove from this portion of Preferred Plan and only include as Project R16.	
(B17) N. Main /E. Main Street	Buffered Bike Lane - From Helman Street to Siskiyou Boulevard. Included as part of Projects R15 and R37.	Remove from this portion of Preferred Plan and only include as Project R15 and R37.	
(B18) N. Main Street	Bike Lane - From Jackson Street to Helman Street. Included as part of Projects R35 and R36.	Remove from this portion of Preferred Plan and only include as Project R35 and R36.	
(B20) Water Street	Bicycle Boulevard - From Hersey Street to N. Main Street		
(B33) 1 st Street	Bicycle Boulevard - A Street to E. Main Street		
(L3) Incorporate Wider Sidewalks	One of seven policies to enhance the downtown. As feasible, incorporate wider sidewalks into downtown projects to provide more space for pedestrians.		Approved - group consensus
(L4) Street Patios	One of seven policies to enhance the downtown. Allow for downtown restaurant owners to apply for temporary seasonal street patios.		Move to (S2) Parking Study as noted at 11/29/11 meeting.
(L5) Incorporate Preferred Pedestrian Treatments	One of seven policies to enhance the downtown. Incorporate preferred pedestrian treatments into downtown projects, as feasible.		Approved - group consensus
(L6) Encourage Alley Enhancements	One of seven policies to enhance the downtown. Encourages property owners along alleys to enhance the environment through improved landscaping, businesses oriented towards the alley and other similar characteristics.		Approved - group consensus
(L7) Incorporate Bicycle Parking	One of seven policies to enhance the downtown. As feasible, incorporate bicycle parking into downtown projects.		Approved - group consensus
(L8) Develop Incentives for Truck Loading/Unloading	One of seven policies to enhance the downtown. Work with Chamber of Commerce and downtown business owners to reduce delivery and pick-up of goods in peak hours.		Approved - group consensus
(L9) Update Downtown Parking Management	One of seven policies to enhance the downtown. Work with Chamber of Commerce and downtown business to update parking management strategies.		Approved - group consensus
(P17) Beaver Slide	From Water Street to Lithia Way	Needs sidewalk on south side of street - High Priority	Approved staff recommendation - 3/15/12 meeting.
(R3/R4) E. Main Street (OR 99 Southbound)/Oak Street Intersection Improvements	Install a traffic signal and convert the eastbound right turn lane from a free flow movement to a signalized movement.		Tabled for downtown Plan subcommittee at 3/15/11 meeting.
(R5) Siskiyou Boulevard (OR 99)-Lithia Way (OR 99 NB)-E. Main Street (OR 99 SB)/East Main Street Intersection Improvements	Improve visibility of signal heads. Identify and install treatments to slow vehicles on northbound approach		Tabled for downtown Plan subcommittee at 3/15/11 meeting.
(R11) Lithia Way (OR 99 NB)/Oak Street Intersection Improvements	Install a traffic signal		Tabled for downtown Plan subcommittee at 3/15/11 meeting.
(R15) E. Main Street (OR 99 SB) Cross-Section Modifications	Modify the cross-section of E. Main Street from Oak Street to southern couplet terminus to two vehicle travel lanes with a buffered bicycle lane	Include project B17 information in this project.	Approved - group consensus
(R16) Lithia Way (OR 99 NB) Cross-Section Modifications	Modify the cross-section of Lithia Way to provide buffered space between the bicycle lane and vehicles		Approved - group consensus
(R37) Main Street Cross-Section Modification with Wider Sidewalks	Update the Main Street roadway cross-section from R15 to include wider sidewalks. Requires converting buffered bicycle lane to a traditional bicycle lane	Include project B17 information in this project.	
(S2) Downtown Parking Management Plan Study	Study to evaluate the effectiveness of updated downtown parking management strategies and initiatives as well as their transferability to other parts of Ashland such as the Railroad District and Croman Mill Site.		Amend to include any bike parking that removes parking spaces that would be included in this study (as approved at 11/29/11 meeting).
(S8) Downtown Couplet Transition Study	Evaluate the feasibility and costs associated with removing the downtown couplet system and returning two-way traffic to Main Street and Lithia Way		Study for Lithia Way two-way / Leave main St one-way (2/9/12 meeting).
(X1) 4 th Street At-Grade Railroad Crossing	Pursue and new at-grade railroad crossing at 4 th Street. Coordinate with Project R18.		



**Downtown Projects
for Subcommittee Meeting**

**Figure
1**